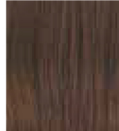


BRUNETTES

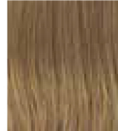


RL2/4
Off Black



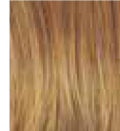
RL6/30
Copper Mahogany

BLONDES



RL12/16
Honey Toast

REDS



RL29/25
Golden Russet

GRAYS

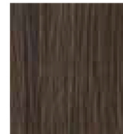


RL38
Smoke

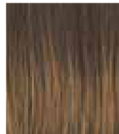
SHADOW SHADES®



RL8/29SS
Shaded Hazelnut



RL4/6
Black Coffee



RL8/29
Hazelnut



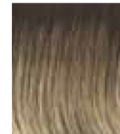
RL13/88
Golden Pecan



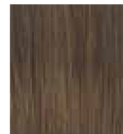
RL30/27
Rusty Auburn



RL56/60
Silver



RL12/22SS
Shaded Cappuccino



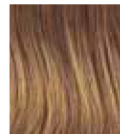
RL6/8
Dark Chocolate



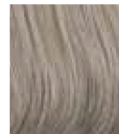
RL10/12
Sunlit Chestnut



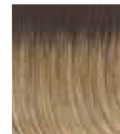
RL14/22
Pale Gold Wheat



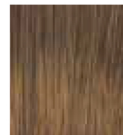
RL31/29
Fiery Copper



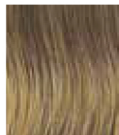
RL119
Silver & Smoke



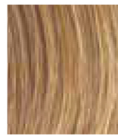
RL14/22SS
Shaded Wheat



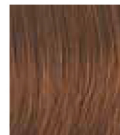
RL5/27
Ginger Brown



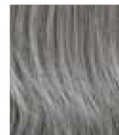
RL11/25
Golden Walnut



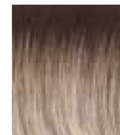
RL14/25
Honey Ginger



RL32/31
Cinnabar



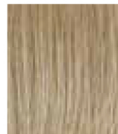
RL511
Sugar & Charcoal



RL19/23SS
Shaded Biscuit



RL6/28
Bronzed Sable



RL16/88
Pale Golden Honey



RL33/35
Deepest Ruby



RL19/23
Biscuit



RL25/27
Butterscotch

BRUNETTES



R1HH
Black



R5HH
Light Reddish
Brown



R8HH
Golden Blonde



R3HH
Dark Brown



R6HH
Medium Auburn



R9HH
Light Golden Blonde



R4HH
Chestnut Brown



R7HH
Strawberry Blonde



R10HH
Palest Blonde

All Raquel Welch human hair color levels have been specially processed so that they can be professionally colored and or permed to match any client's needs.

HEAD SIZES/CIRCUMFERENCES:

P (Petite: 21")

PA (Petite Average: 21¼")

A (Average: 21½")

L (Large: 23")

All **S** and **S+** multi-dimensional blends reflect the latest coloring techniques being used in top salons around the country. These colors are specially blended in the front and crown with highlights and lowlights that compliment the basic color.

Foil colors are multi-tonal shades that are specially created to reflect today's dramatic color blends. They include an all over base color with two contrasting highlight colors around the face.

Shadow Shades® feature a darker color depth at the root.

Reflecting the subtler colorations featured in the latest beauty publications, **Fashion Shadow Shades®** offer a softer contrast between the darker root and base color.

Pictured colors may vary slightly from actual colors.

Vibrante® Hair

BRUNETTES	BLONDES			REDS	HIGHLIGHTS	GRAYS	SHADOW SHADES®			FASHION SHADOW SHADES®
 R2 Ebony	 R830 Ginger Brown	 R14/88H Golden Wheat	 R25 Ginger Blonde	 R28S/R28S+ Glazed Fire	 R6/28H Coppery Mink	 R38 Smoked Walnut	 R60 White Mist	 SS8/25 Golden Walnut	 SS14/88 Golden Wheat	 SS4/6 Espresso
 R4 Midnight Brown	 R9S/R9S+ Glazed Mahogany	 R16 Honey Blonde	 R101 Pearl Platinum	 R29S/R29S+ Glazed Strawberry	 R6/30H Chocolate Copper	 R44 Steel Gray	 R61 Palest Pearl	 SS8/29 Hazelnut	 SS23 Vanilla	 SS4/33 Eggplant
 R6 Dark Chocolate	 R10 Chestnut	 R21T Sandy Blonde	 R1416T Buttered Toast	 R30 Auburn	 R8/25 Golden Walnut	 R48 Walnut Mist	 R119G Gradient Smoke	 SS10 Chestnut	 SS29 Glazed Strawberry	 SS9/30 Cocoa
 R8 Dark Cinnamon	 R11S/R11S+ Glazed Mocha	 R22 Swedish Blonde	 R1621S/R1621S+ Glazed Sand	 R33 Dark Auburn	 R9F26 Mocha Foil	 R56 Smoke	 R388G Gradient Smoked Walnut	 SS11/29 Nutmeg	 SS29/20 Strawberry Blonde	 SS12/20 Toast
 R829S/R829S+ Glazed Hazelnut	 R12T Pecan Brown	 R23S/R23S+ Glazed Vanilla	 R2026S Glazed Apricot	 R32/31 Cinnabar	 R12/26H Honey Pecan	 R56/60 Silver Mist	 R511G Gradient Charcoal	 SS12/22 Cappuccino	 SS130 Dark Copper	 SS15/24 Champagne
 <p>Kanealon and Vibrante are registered trademarks of Kaneka Corporation.</p>				 R3025S/R3025S+ Glazed Cinnamon	 R13F25 Praline Foil		 SS14/25 Honey Ginger		 SS23/61 Cream	
				 R3329S/R3329S+ Glazed Auburn	 R14/25 Honey Ginger				 SS30/28 Spice	
					 R1020 Buttered Walnut				 SS44/60 Sugared Licorice	



HairUWear® is a proud sponsor of the American Cancer Society.